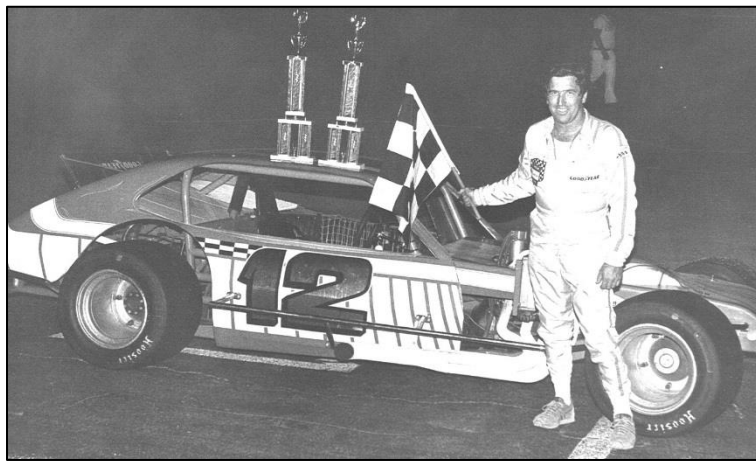




## PHOTO TRIVIA ANSWER – WINTER, 2017



*Okay, you're thinking, "Not much of a challenge here", right? The driver is none other than Gil Hearne, holding one of many checkered flags earned during his driving career. This issue's Photo Trivia isn't about the identity of the driver. It's about a unique fact concerning what else is in the picture. See our lead story for a hint.*

The interesting thing about this photo is not the driver, not the trophies or checkered flag, but rather the CAR.

You may recall that our lead story was about Maynard Troyer of Rochester, NY and the beginnings of his race car chassis building company, started in 1977. Prior to that time, most race cars were home-built, with a few exceptions (like contemporary Toby Tobias' dirt Modifieds). While Troyer Engineering (now Troyer Race Cars) was not the only car builder to open their doors, over the years this company has been the most prolific on the East Coast, building asphalt and dirt short-track race cars.

The #12 Pinto seen above is a "Troyer car". Not just any race car made by Troyer Engineering, but the first *complete* race car they built. The car was built in 1978 and bought by car owner Tom Durkin, but didn't see racing until the following season. It was one of the first Troyer Engineering cars to be raced at Wall Stadium. Fittingly enough, this car is now owned by club member Marty Van Druten, who was a long-time crew member on Gil Hearne's race team.